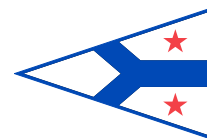




CHICAGO CORINTHIAN YACHT CLUB



SAILING INSTRUCTIONS - AMENDMENT #1

-- Hobelman Long Distance --

1. COURSE

1.1. A course will be chosen by the Race Committee from the following list. The chosen course's letter designation shall be displayed on a white mark up board by the Race Committee no later than 10 minutes prior to the first warning signal. The Race Committee may also fly a pennant with the course's letter designation. The Race Committee will make courtesy broadcasts announcing the choice of course on channel 78 VHF. Failure to receive these communications shall not be grounds for redress. This changes RRS 62.1.. There are 10 possible courses. The denotation "P" or "S" after the name of the mark indicates the side on which the mark shall be passed. Otherwise, marks are to be left on the side noted after the course length.

E:	ALT START > E2 > SE2 > R4 > 4 Mile Crib > FIN	(21.48 NM, STARBOARD)
NW:	ALT START > V > T > SE2 > 4 Mile Crib > FIN	(20.27 NM, STARBOARD)
NE:	ALT START > T > SE2 > 4 Mile Crib > FIN	(17.02 NM, STARBOARD)
NE-:	ALT START > T > SE2 > Dever Crib > FIN	(12.88 NM, STARBOARD)
NWW:	ALT START > NE > V > T > SE2 > 4 Mile Crib > FIN	(20.51 NM, STARBOARD)
S:	ALT START > Dever Crib > 4 Mile Crib > T > V > FIN	(19.11 NM, PORT)
S-:	ALT START > Dever Crib > SE2 > E2 > V > FIN	(14.34 NM, PORT)
SE:	ALT START > SE2 "S" > 4 Mile Crib "S" > T "P" > V "P" > FIN	(21.05 NM, PORT)
SW:	ALT START > SE > 4 Mile Crib > T > V > FIN	(19.83 NM, PORT)
W:	ALT START > W > V > T > SE2 > 4 Mile Crib > FIN	(22.21 NM, STARBOARD)

1.2. CCYC MAINTAINED MARKS

NOTE: LAT / LONG in DEGREES & DECIMAL MINUTES				
CCYC MARKS	Color	Approximate Latitude/Longitude		Description
ALT START	Orange	N41.57.750	W087.34.500	CCYC DROP MARK
N	Orange/White	N41.58.490	W087.36.400	CCYC circle north mark
NE	White	N41.58.270	W087.35.690	CCYC circle northeast mark
E	White	N41.57.740	W087.35.400	CCYC circle east mark
SE	White	N41.57.210	W087.35.690	CCYC circle southeast mark
S	White	N41.56.990	W087.36.400	CCYC circle south mark
SW	White	N41.57.210	W087.37.110	CCYC circle southwest mark
W	White	N41.57.740	W087.37.400	CCYC circle west mark
NW	White	N41.58.270	W087.37.110	CCYC circle northwest mark
V	White	N42.00.740	W087.36.400	CCYC distant north mark
T	White	N42.00.120	W087.33.070	CCYC distant northeast mark
E2	White	N41.57.740	W087.32.400	CCYC distant east mark
SE2	White	N41.55.830	W087.31.630	CCYC distant southeast mark



CHICAGO CORINTHIAN YACHT CLUB



SAILING INSTRUCTIONS - AMENDMENT #1

-- Hobelman Long Distance --

2. FINISHING

- 2.1. **Sail number boards must be displayed on the shore side of the boat at the finish.** The material used in the construction of the sail number board is optional.
- 2.2. No yacht finish report shall be required. Boats are to contact the race committee on channel 78 approximately one half mile before they finish. Upon finishing boats are required to contact the race committee and report their finish time according to GPS time and shall receive confirmation from the Race Committee that they have finished.

3. DOCKAGE

- 3.1. Rafting privileges will be extended for entered yachts. There is no need to contact the harbor master. All are welcome to enter the harbor and tie up.

SEE FOLLOWING PAGES FOR COURSE DIAGRAMS.



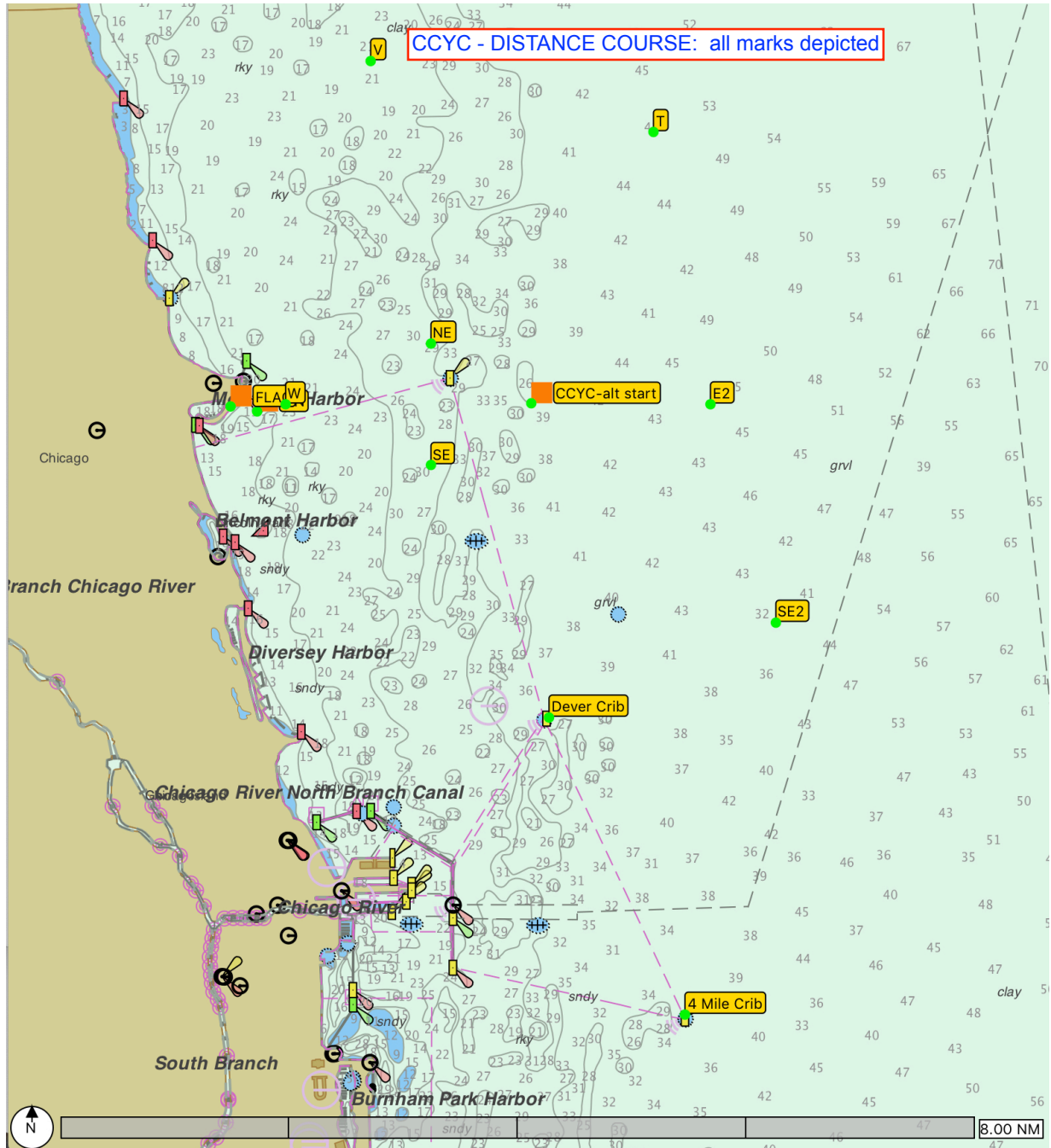
CHICAGO CORINTHIAN YACHT CLUB



SAILING INSTRUCTIONS - AMENDMENT #1

-- Hobelman Long Distance --

- ALL MARKS DEPICTED





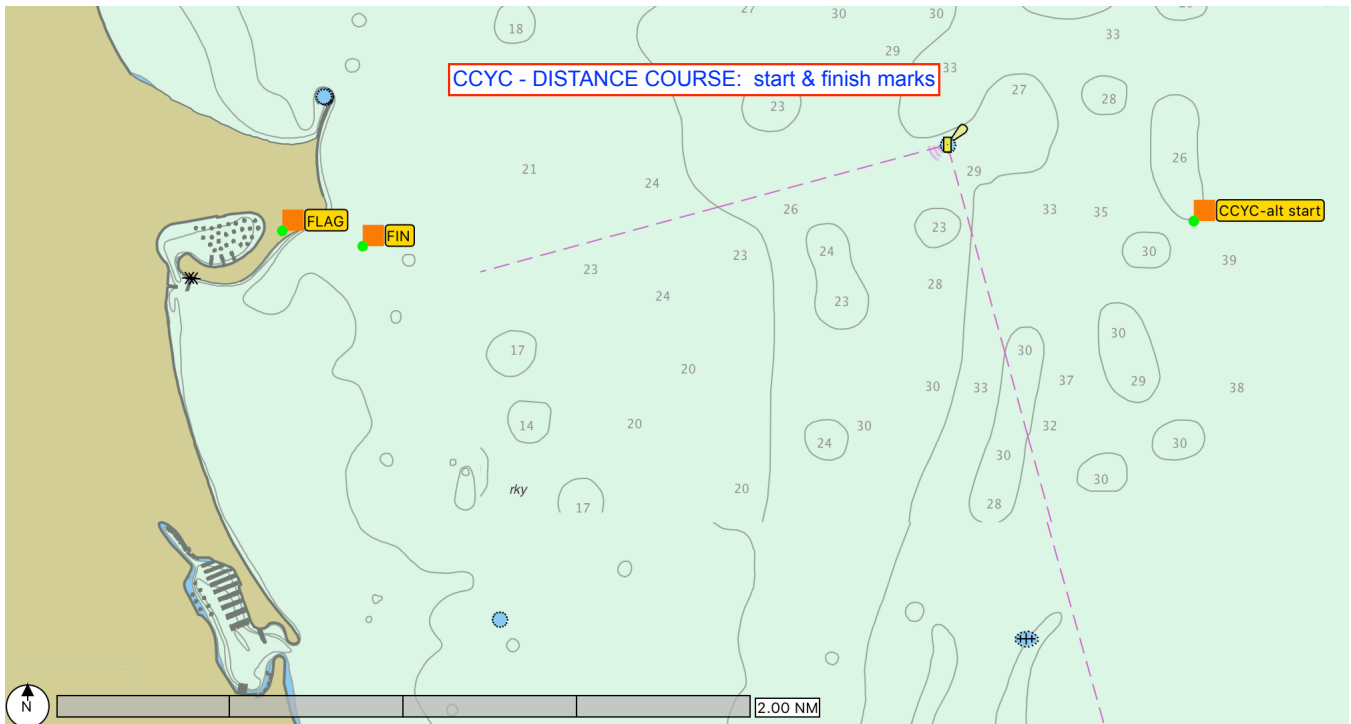
CHICAGO CORINTHIAN YACHT CLUB



SAILING INSTRUCTIONS - AMENDMENT #1

-- Hobelman Long Distance --

- START & FINISH MARK DETAILS





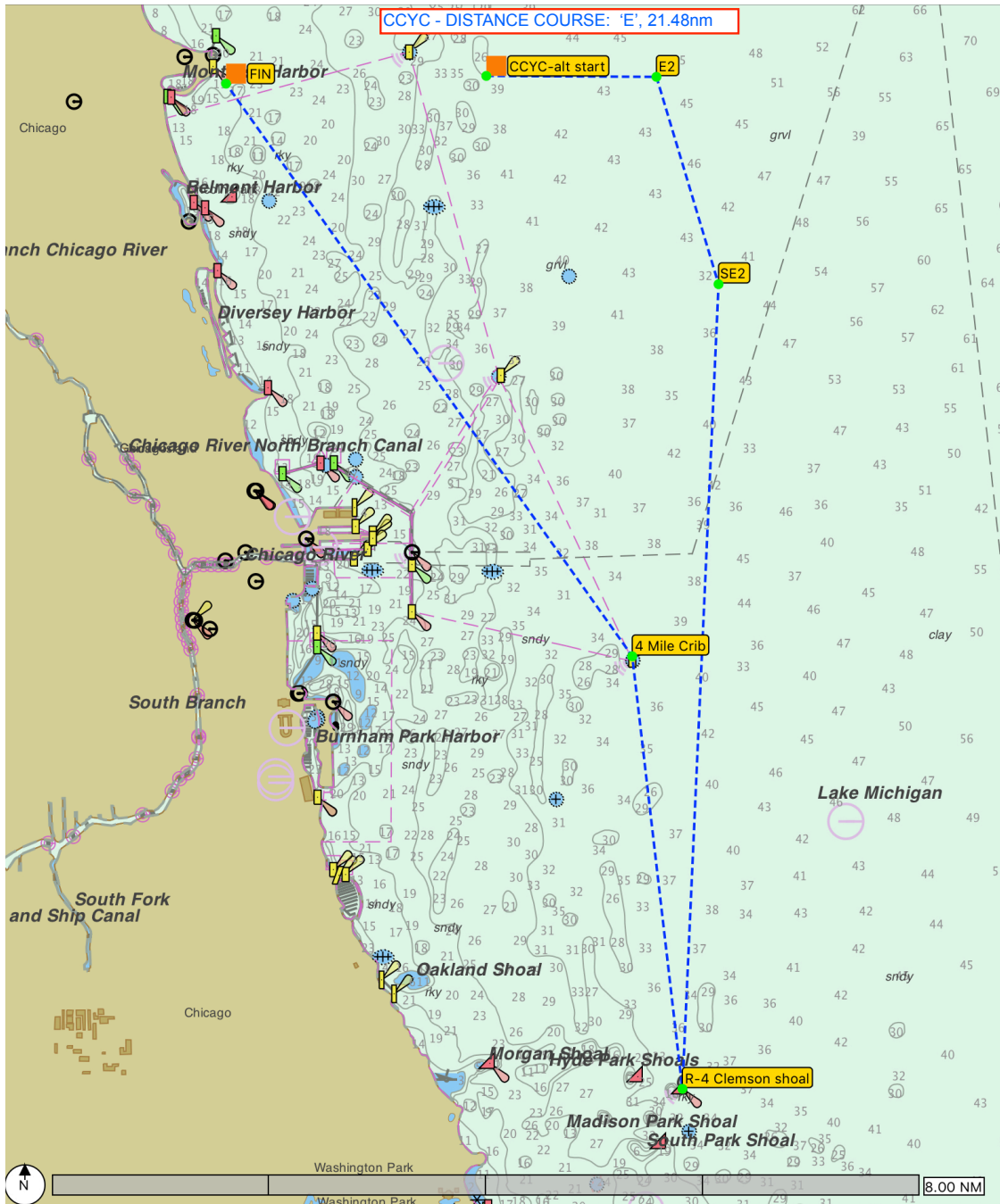
CHICAGO CORINTHIAN YACHT CLUB



SAILING INSTRUCTIONS - AMENDMENT #1

-- Hobelman Long Distance --

COURSE "E" (21.48 nm)





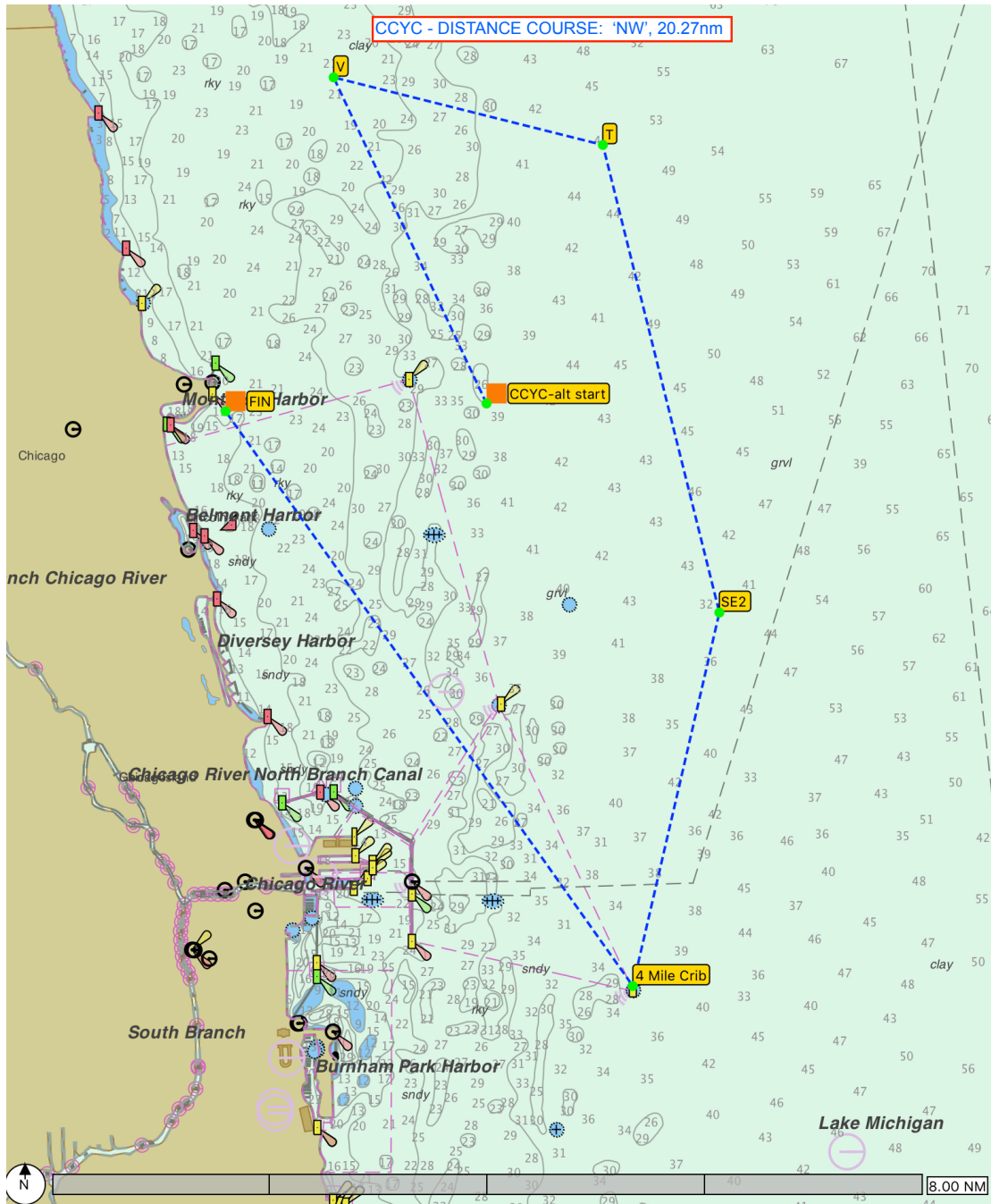
CHICAGO CORINTHIAN YACHT CLUB



SAILING INSTRUCTIONS - AMENDMENT #1

-- Hobelman Long Distance --

COURSE "NW" (20.27 nm)





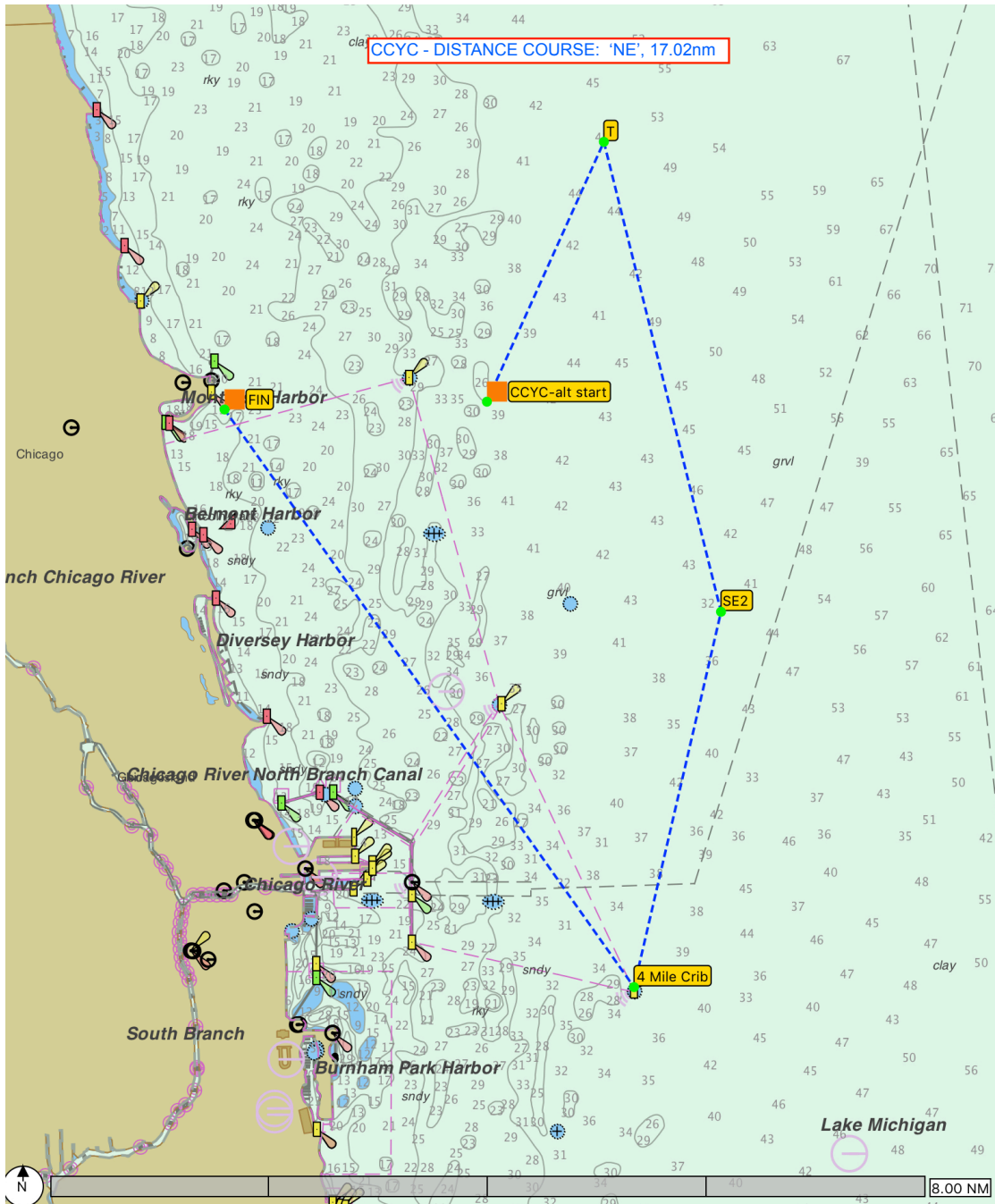
CHICAGO CORINTHIAN YACHT CLUB



SAILING INSTRUCTIONS - AMENDMENT #1

-- Hobelman Long Distance --

COURSE "NE" (17.02 nm)





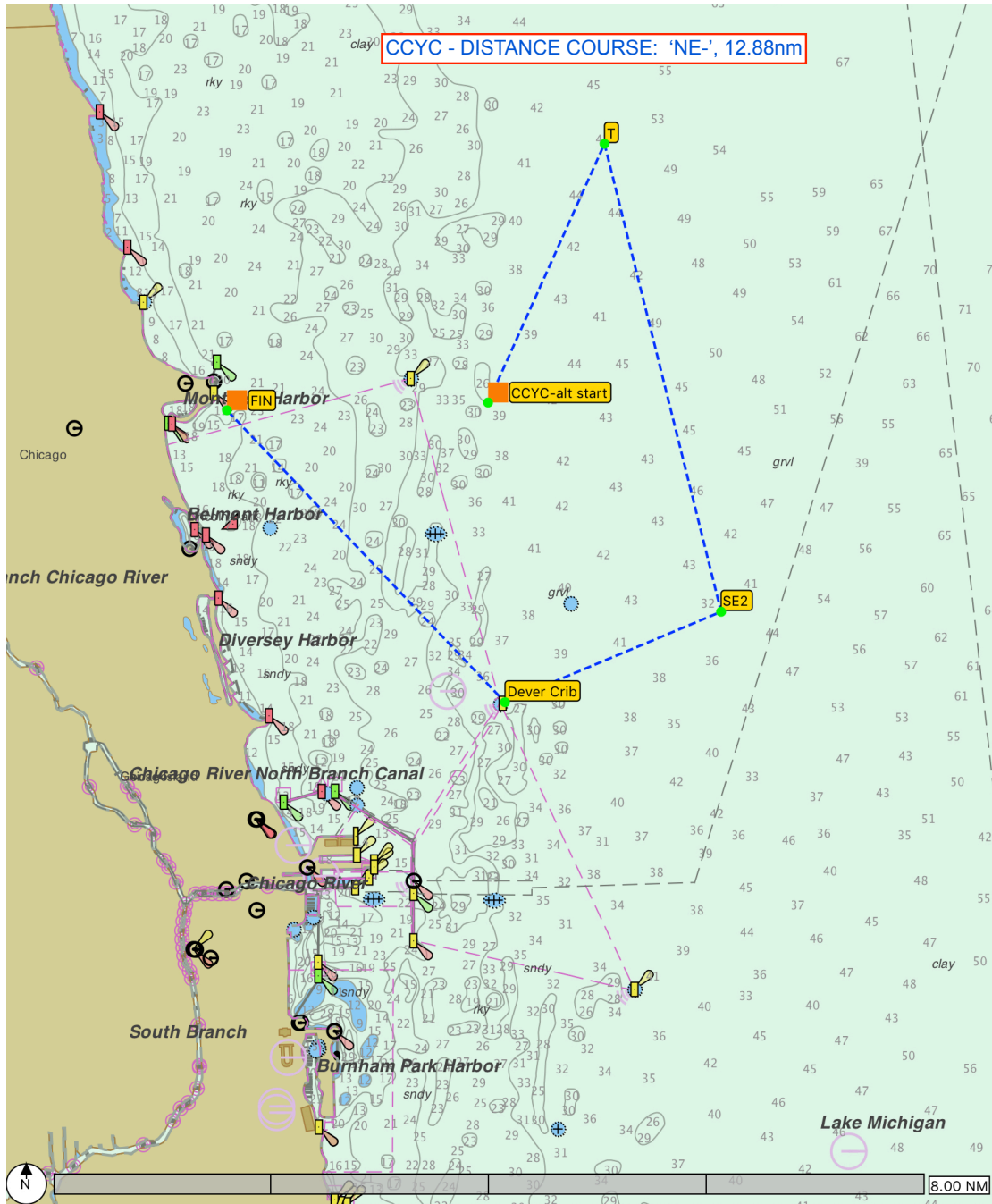
CHICAGO CORINTHIAN YACHT CLUB



SAILING INSTRUCTIONS - AMENDMENT #1

-- Hobelman Long Distance --

COURSE "NE -" (12.88 nm)





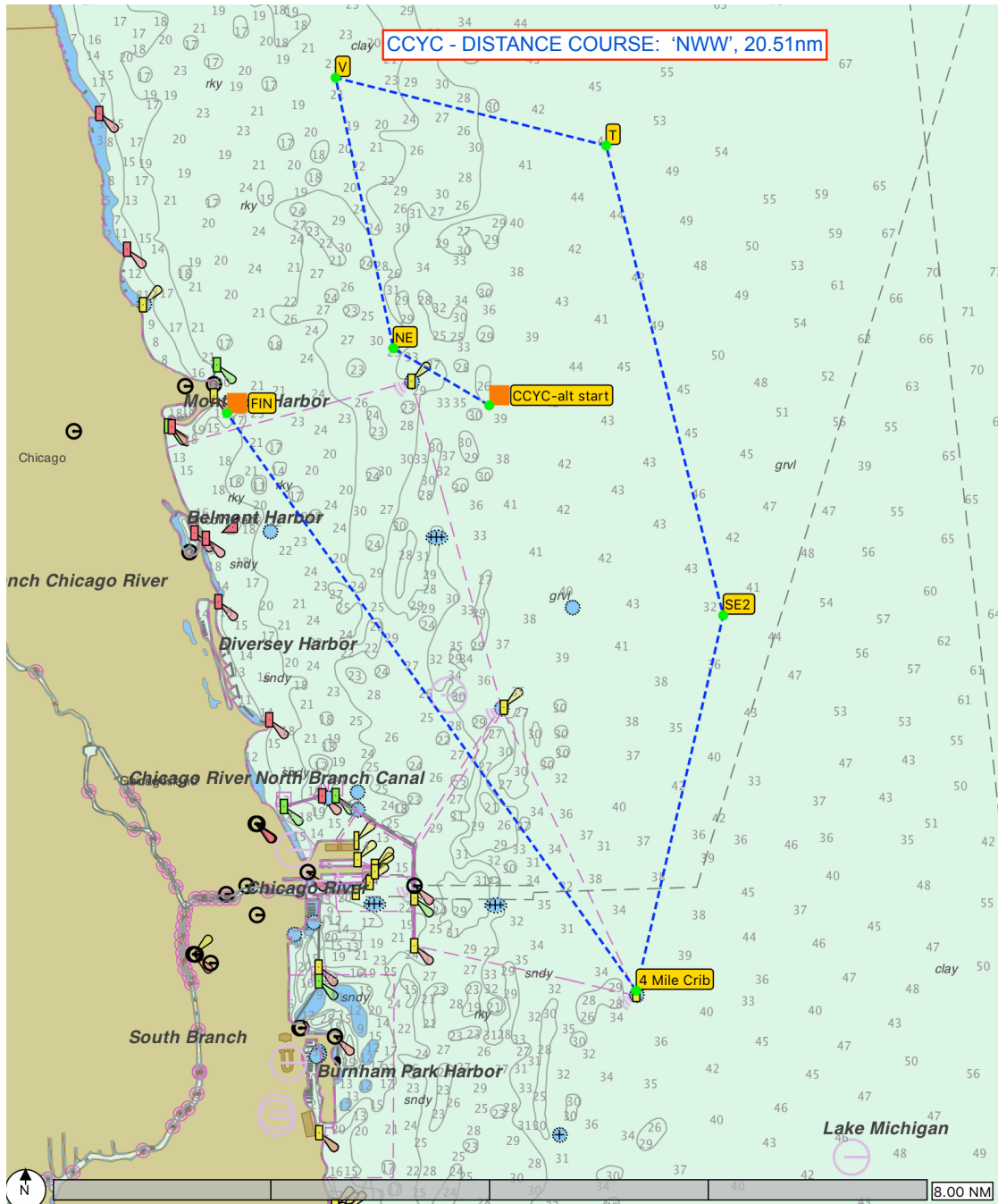
CHICAGO CORINTHIAN YACHT CLUB



SAILING INSTRUCTIONS - AMENDMENT #1

-- Hobelman Long Distance --

COURSE "NWW" (20.51 nm)





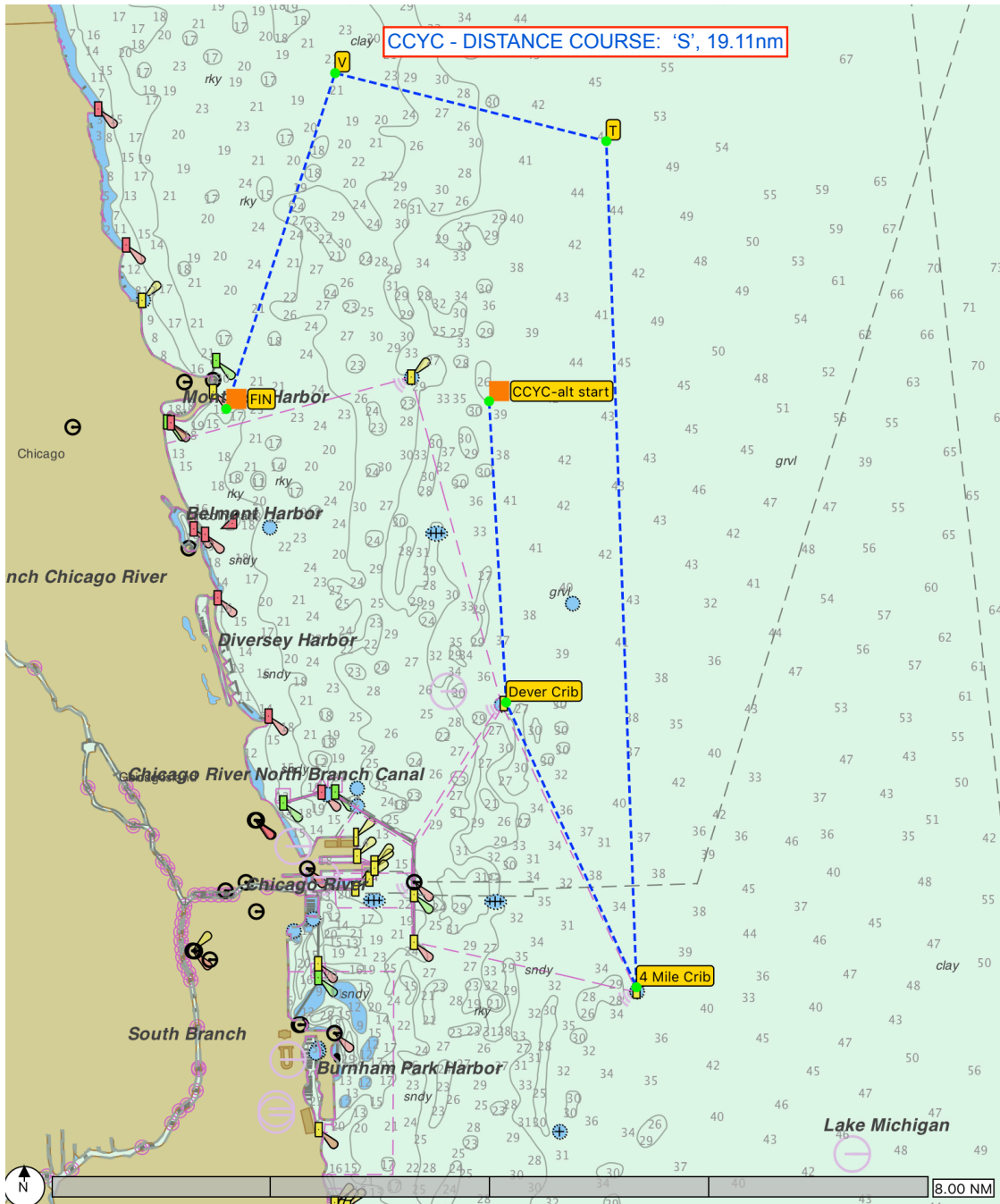
CHICAGO CORINTHIAN YACHT CLUB



SAILING INSTRUCTIONS - AMENDMENT #1

-- Hobelman Long Distance --

COURSE "S" (19.11 nm)





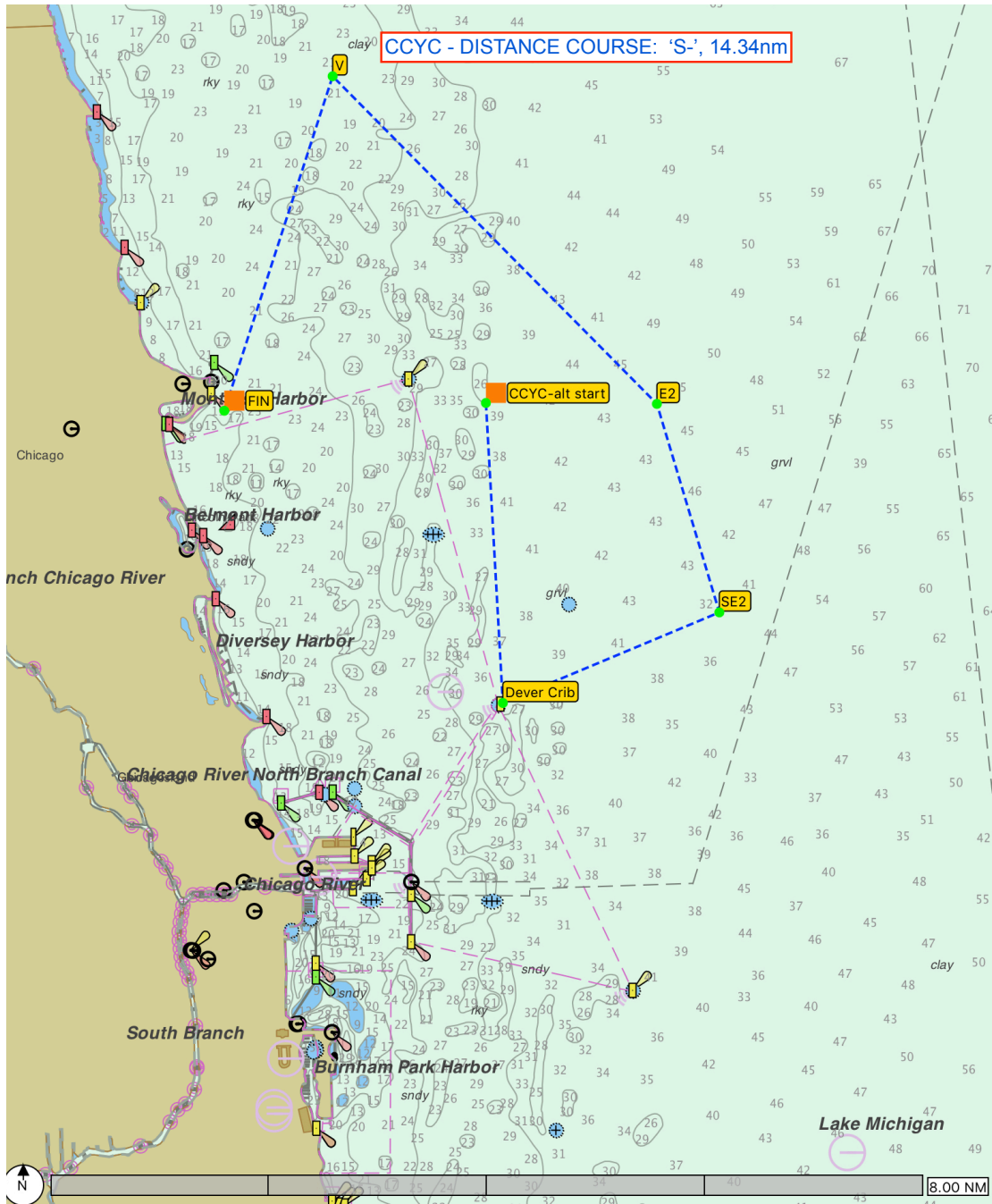
CHICAGO CORINTHIAN YACHT CLUB



SAILING INSTRUCTIONS - AMENDMENT #1

-- Hobelman Long Distance --

COURSE "S-" (14.34 nm)



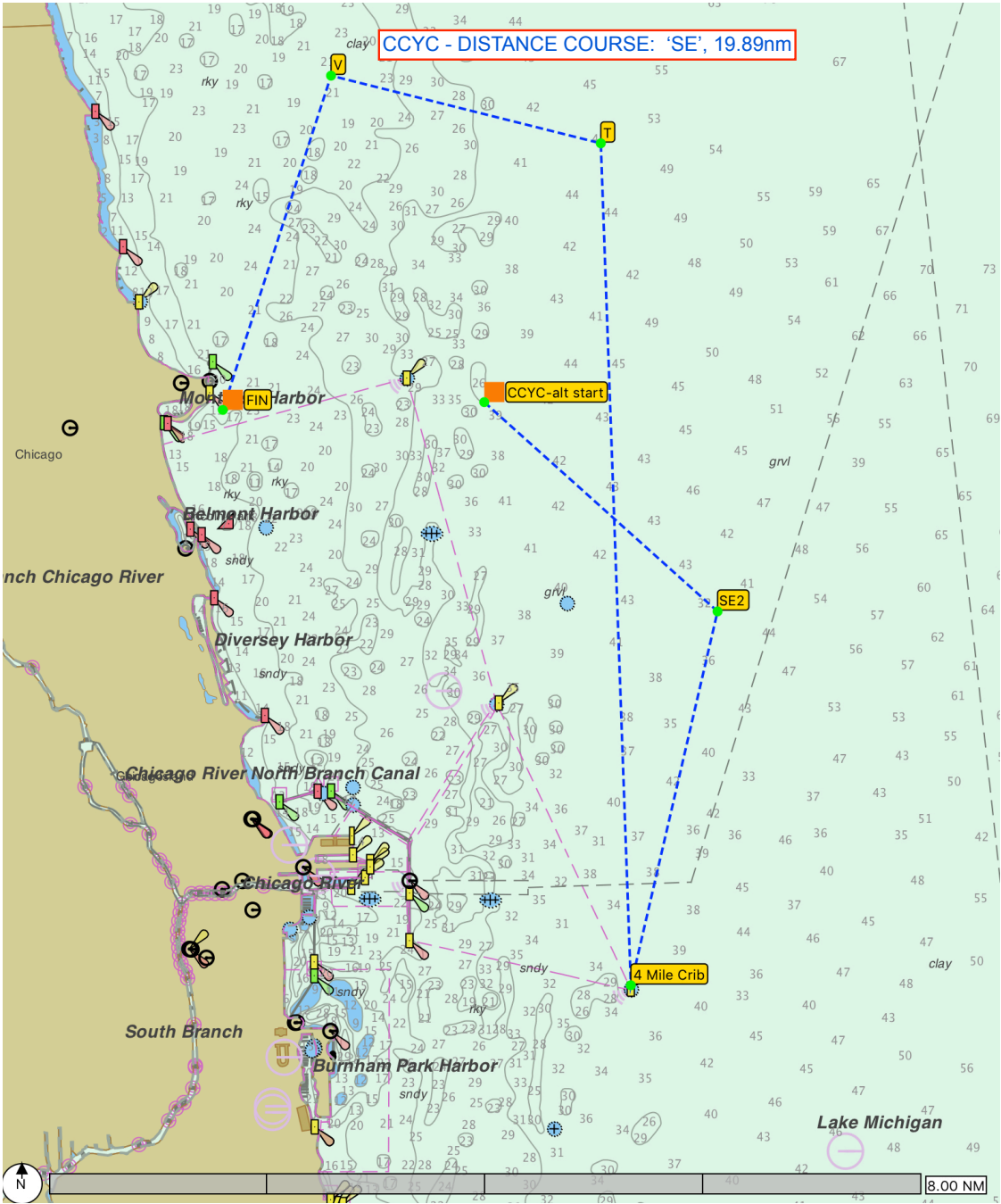
CHICAGO CORINTHIAN YACHT CLUB



SAILING INSTRUCTIONS - AMENDMENT #1

-- Hobelman Long Distance --

COURSE "SE" (19.89 nm)





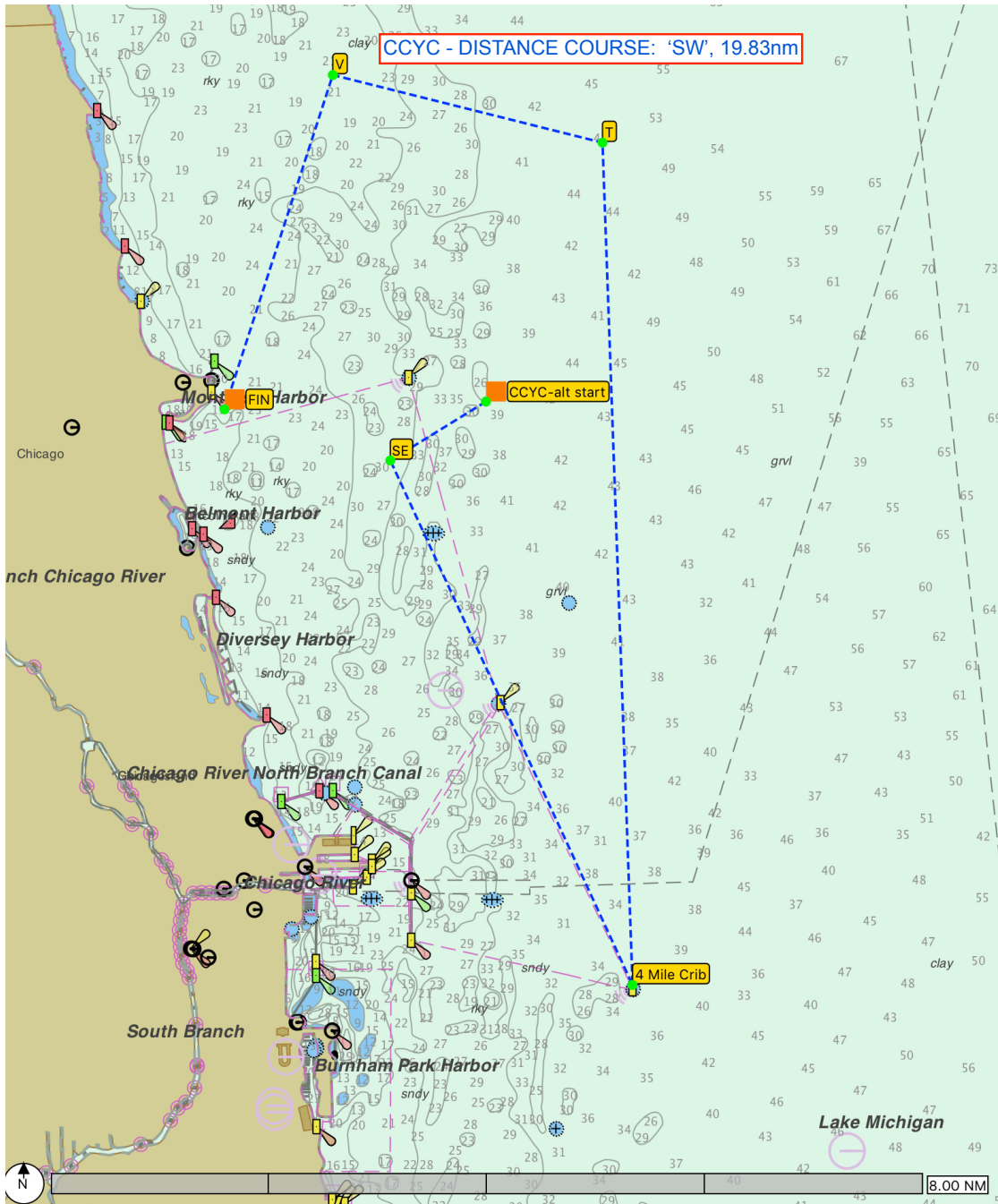
CHICAGO CORINTHIAN YACHT CLUB



SAILING INSTRUCTIONS - AMENDMENT #1

-- Hobelman Long Distance --

COURSE "SW" (19.83 nm)





CHICAGO CORINTHIAN YACHT CLUB



SAILING INSTRUCTIONS - AMENDMENT #1

-- Hobelman Long Distance --

COURSE "W" (22.21 nm)

